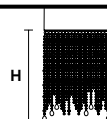




VE 893 S9

Suspension



TECHNICAL INFORMATIONS

Ø 70 cm / 27.60"
 H 80 cm / 31.50"
 W 25 kg / 55.11 lb

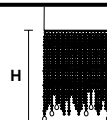


LIGHTING SYSTEM

9×E27×60 W max
 (not included).

VE 893 S9 TRASP

Suspension



TECHNICAL INFORMATIONS

Ø 70 cm / 27.60"
 H 80 cm / 31.50"
 W 25 kg / 55.11 lb



LIGHTING SYSTEM

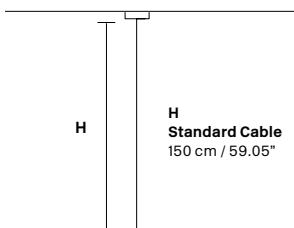
9×E27×60 W max
 (not included).

Telaio in metallo verniciato e pendagli in vetro verniciato o solo in vetro trasparente.

Powder coated metal frame and painted glass pendants or only transparent pendants.



V71
 Painted matt nickel

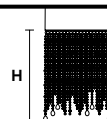


: for the US market, refer to the relevant price list.



VE 893 S9

Suspension



TECHNICAL INFORMATIONS

Ø 70 cm / 27.60"
 H 80 cm / 31.50"
 W 25 kg / 55.11 lb

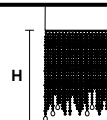


LIGHTING SYSTEM

9×E26×60 W max
 (not included).

VE 893 S9 TRASP

Suspension



TECHNICAL INFORMATIONS

Ø 70 cm / 27.60"
 H 80 cm / 31.50"
 W 25 kg / 55.11 lb



LIGHTING SYSTEM

9×E26×60 W max
 (not included).

Telaio in metallo verniciato e pendagli in vetro verniciato o solo in vetro trasparente.

Powder coated metal frame and painted glass pendants or only transparent pendants.



V71
 Painted matt nickel

