

RAQAM M7

Design by: m_p studio

Composition

MASIERO

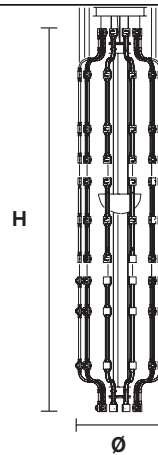


Struttura in metallo ricoperto in vetro, pendagli in cristallo, illuminazione LED.

Metal frame covered with glass, crystal pendants, LED lighting system.

RAQAM M7 BASIC BATCH A 6 X 20 + MODULO 7 X 10

CE



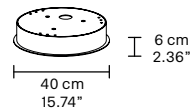
TECHNICAL INFORMATIONS

Ø 62 cm / 24.40"
H 263 cm / 103.54"
W 50 kg / 110.23 lb

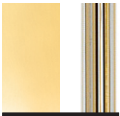
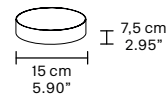
220 LED LIGHTS CRI > 80
3000 K - 352 W - 37400 lm
Dimmable PUSH or DMX

Fixing 1 x canopy
10 x single steel cables

The canopy contains:
2 x drivers



The box contains:
1 x control board



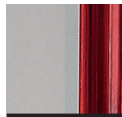
G03
Gold Frame
Transparent Glass



V32
Red Frame
Red Glass



G03
Gold Frame
Orange Glass



G04
Chrome Frame
Red Glass



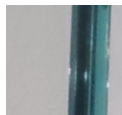
G14
Burnished brass
Transparent Glass



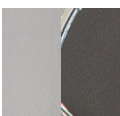
V61
Green frame
Green Glass



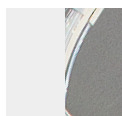
V82
Brown Frame
Orange Glass



G04
Chrome frame
Green Glass



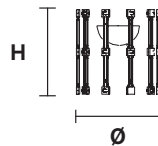
G04
Chrome Frame
Transparent Glass



V95
White frame
Transparent Glass

RAQAM M7 ADDITIONAL ELEMENT TO INCREASE THE OVERLL HEIGHT

CE



TECHNICAL INFORMATIONS

Ø 62 cm / 24.40"
H 58 cm / 22.85"
W 15 kg / 33 lb

30 LED LIGHTS CRI > 80
3000 K - 48 W - 5100 lm
Dimmable PUSH or DMX
on request

Any additional element made of module 7 x 10, requires one additional cup with driver and control board

